

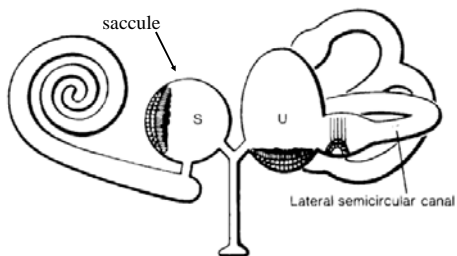
# Vestibular Function Testing

Timothy C. Hain, MD

## Vestibular Tests

- ENG (electronystagmography)
- Rotatory Chair and Vorteq/VAT
- VEMP (Vestibular evoked myogenic responses)
- Posturography

Five motion sensors – can measure two



Schematic of Inner Ear (Frenzel, 1955)

## What are we testing?

- VOR (i.e. input/output, ENG/Rchair)
  - Lateral canal only
- VCR (VEMP test)
  - Saccule only
- Abnormal gravity sensitivity (positional nystagmus)
  - BPPV
- Central tracking and visual acuity (pursuit, saccade test, OKN test)
- Sensorimotor integration (posturography)
  - Documents something related to balance
  - Diagnoses Malingering

What you can (mainly) learn from these tests

- ENG -- unilateral loss, bilateral loss, BPPV
- VEMP test – unilateral loss, otolith disease, SCD
- Rot-chair -- bilateral loss
- Posturography -- malingering